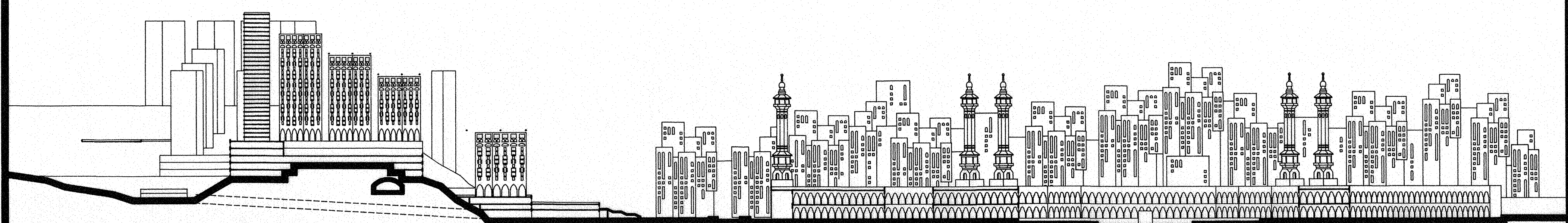
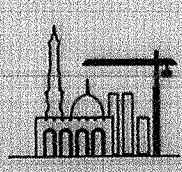
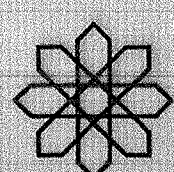


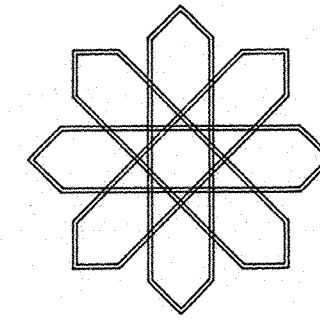
SITE LAYOUT



SECTION A-A

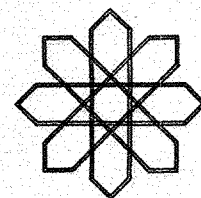




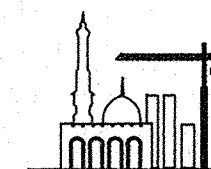


# DEVELOPMENT OF THE AREA SURROUNDING AL—MASJID AL—HARAM

CENTER FOR PLANNING  
AND ARCHITECTURAL STUDIES



MAKKAH CONSTRUCTION  
AND DEVELOPMENT COMPANY

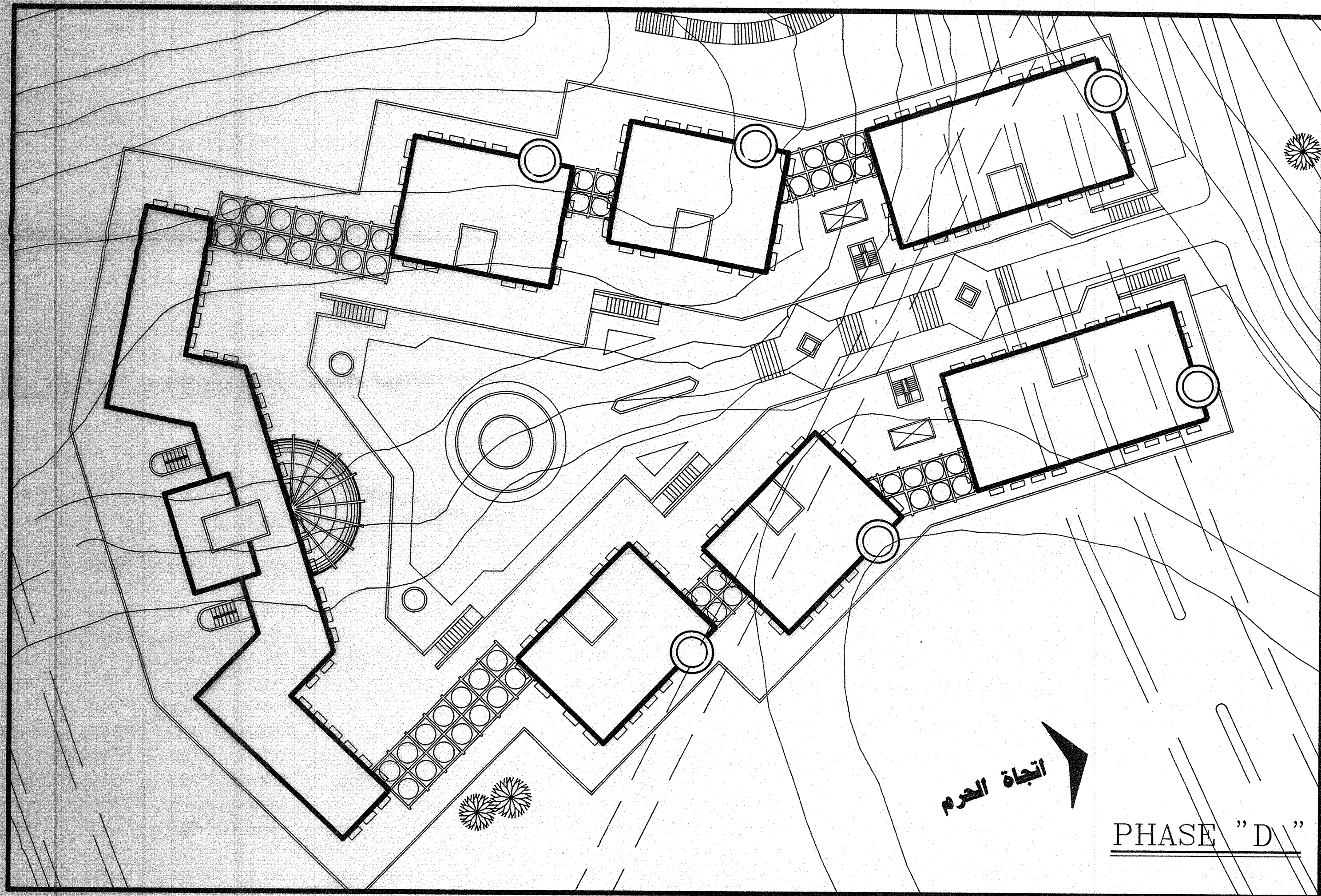




## DEVELOPMENT OF THE AREA SUROUNDING AL- MASJID AL- HARAM

PHASE	PLATFORM(I)		PLATFORM(II)		TOWRS				SITE AREA (M <sup>2</sup> )
	NO. OF FLOORS	AREA OF PLATFORM(I) (M <sup>2</sup> )	NO. OF FLOORS	AREA OF PLATFORM(II) (M <sup>2</sup> )	NO. OF TOWRS	AREA OF TOWR (M <sup>2</sup> )	NO. OF FLOORS	TOTAL AREA (M <sup>2</sup> )	
A	2	8616	-	-	3	432	20	25920	10622
					1	432	15	6480	
								32400	
B	2	7666	-	-	3	432	20	25920	7219
					1	432	15	6480	
								32400	
C	3	25539	2	17955	2	432	15	12960	12769
					2	432	20	17280	
					2	432	25	21600	
					1	1008	30	30240	
								82080	
D	3	29695	2	21913	4	378	20	30240	14848
					2	648	20	25920	
					1	1228	30	36849	
								93009	
E	-	-	2	14101	5	432	20	43200	12582
					3	540	8	12960	
								56160	
F	-	-	-	-	4	432	20	34560	15725
					6	216	8	10368	
								44928	
G	-	-	-	-	6	540	8	25920	22494
					4	432	20	34560	
					3	110	2	661	
								60541	
H	-	-	-	-	12	110	2	2645	18522
					5	216	5	5400	
					2	432	30	25920	
								33965	
I	-	-	-	-	2	432	30	25920	6316
					4	162	20	12960	
								38880	

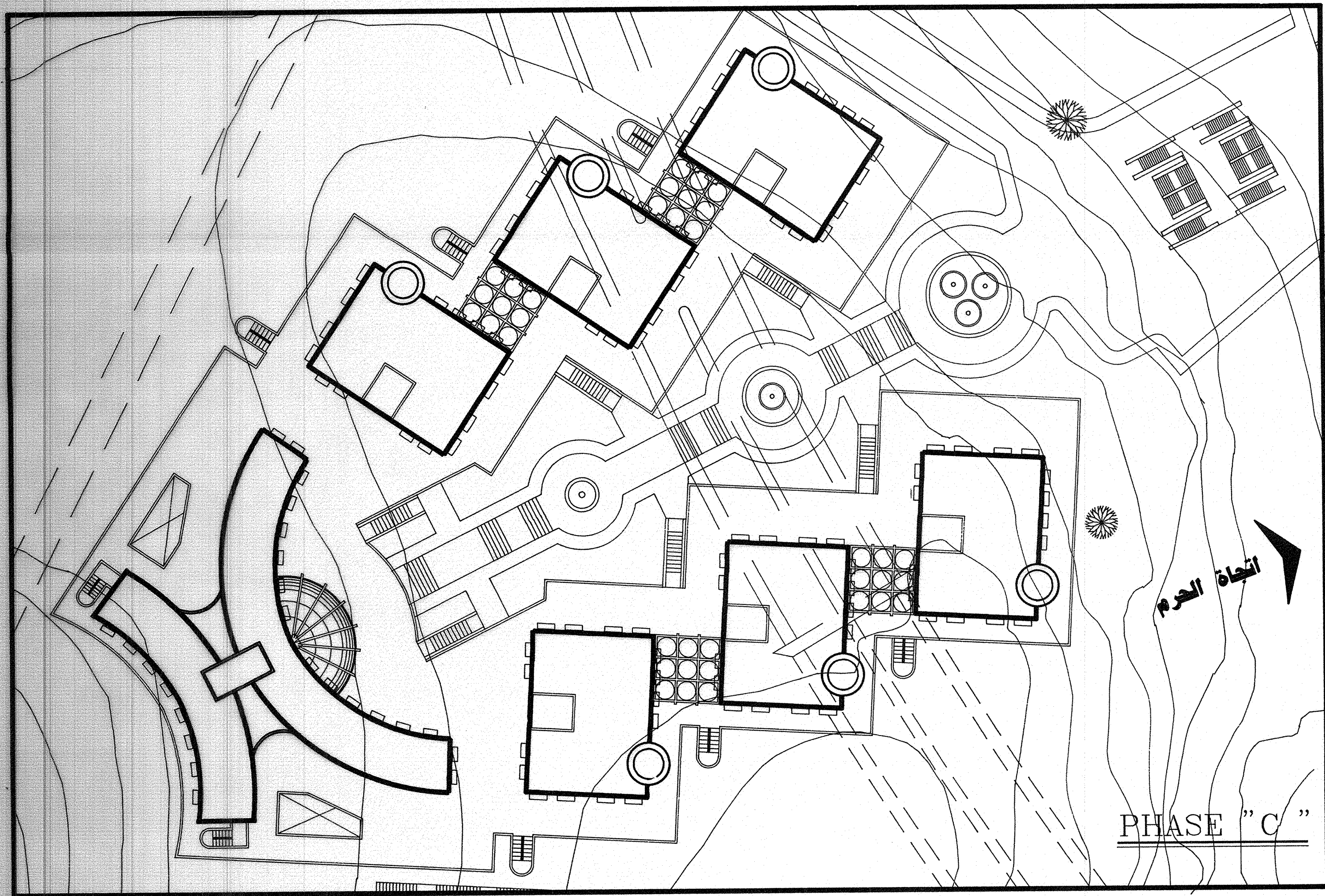




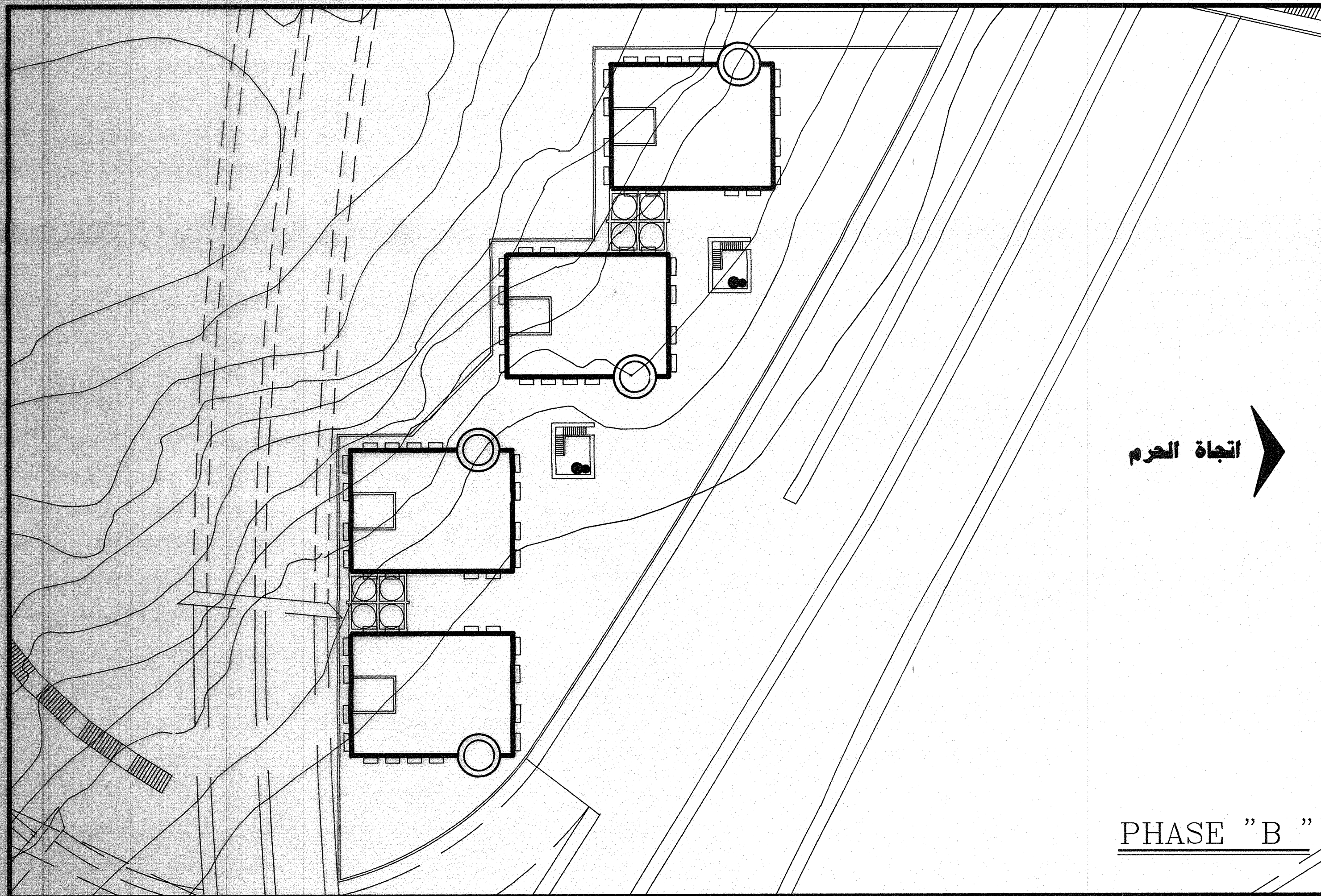
اتجاه الحرم

PHASE "D"





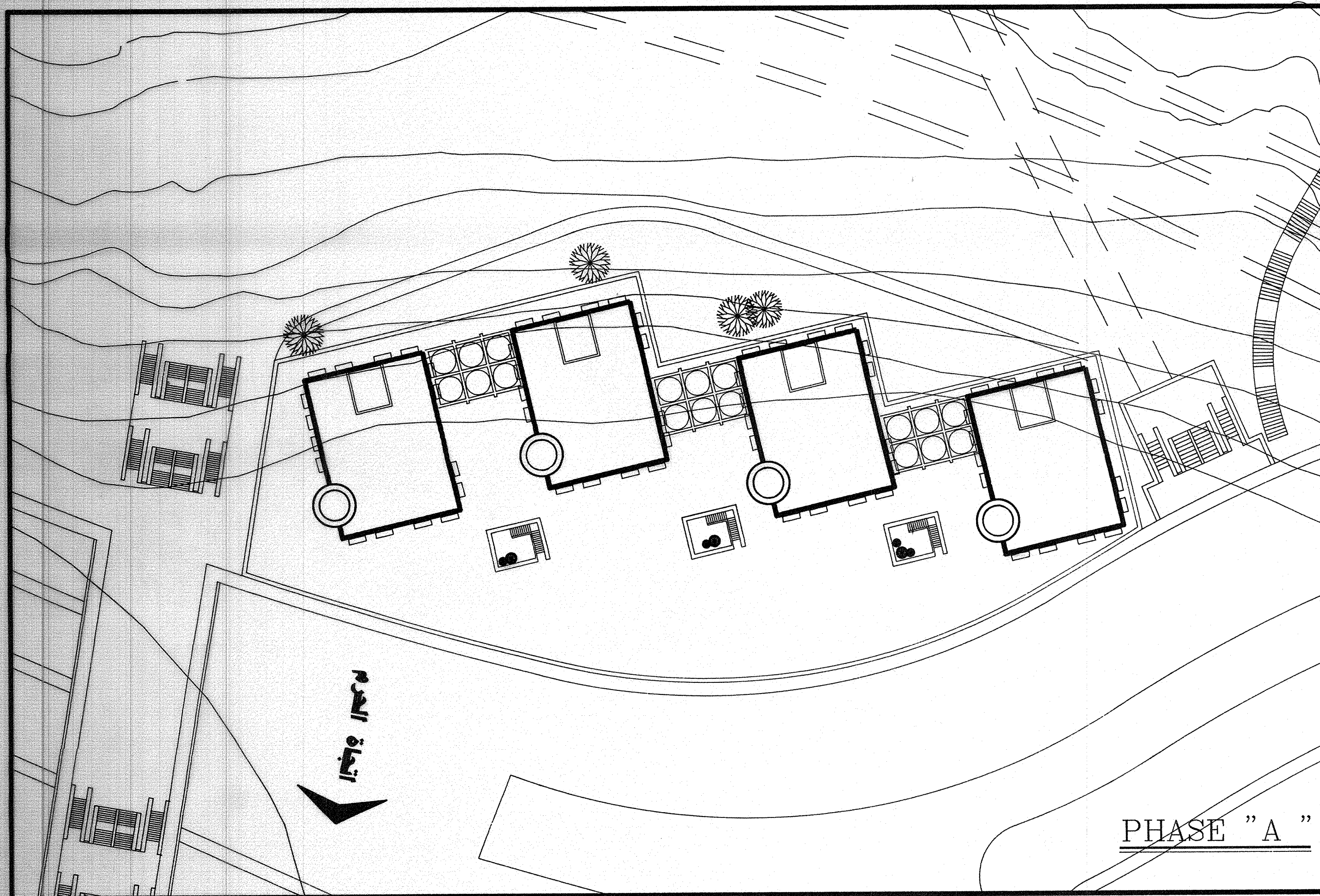




اتجاه الحرم

PHASE "B"

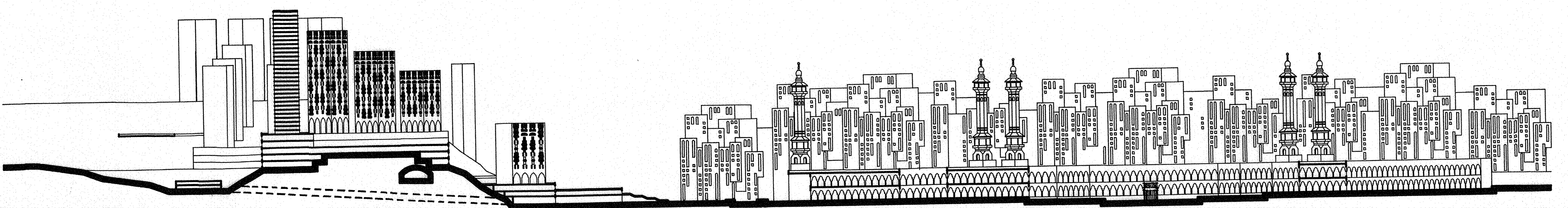
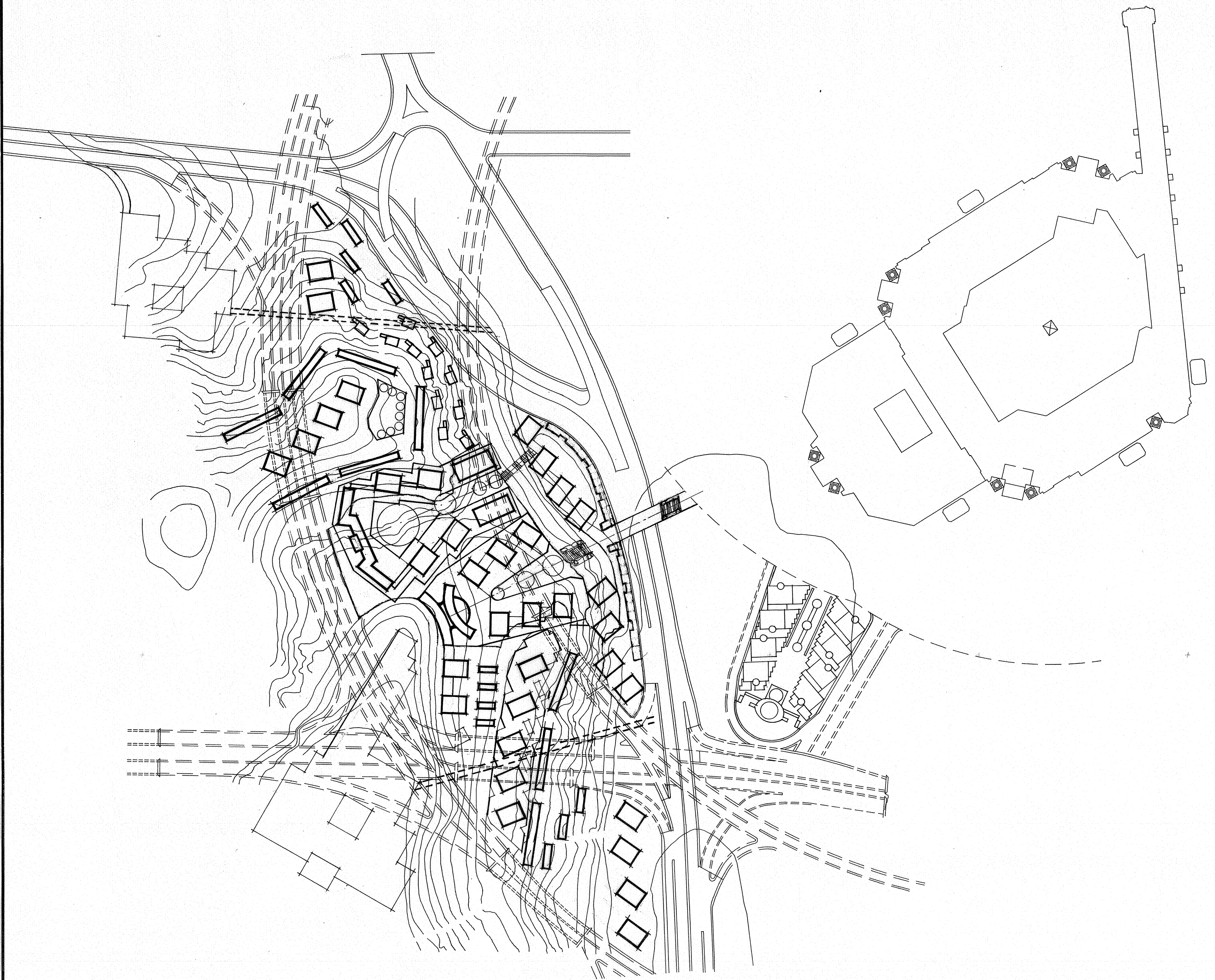




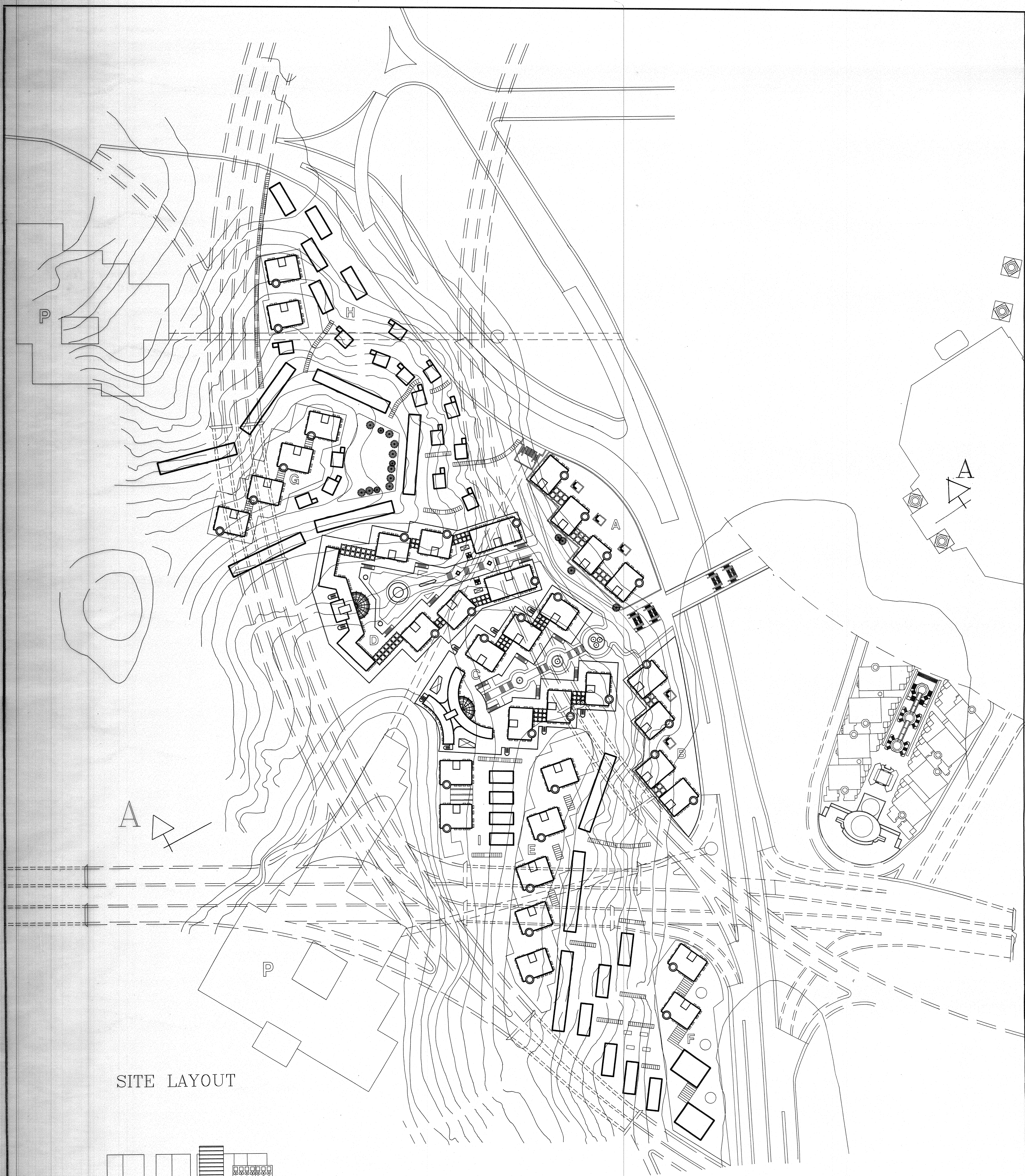
PHASE "A"

اتجاه الشمال

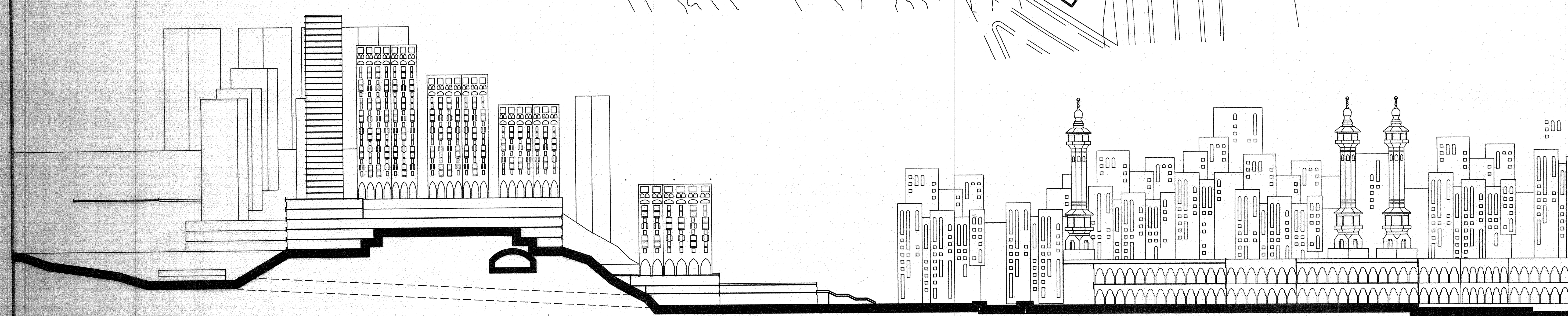






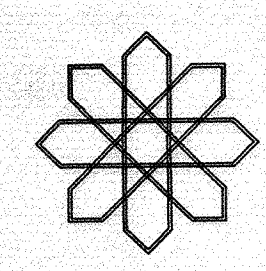


SITE LAYOUT

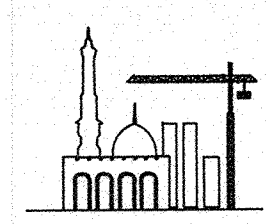


SECTION A-A

CENTER FOR PLANNING  
AND ARCHITECTURAL STUDIES  
14 SOBKY ST., HELIOPOLIS, CAIRO, EGYPT  
TEL 670744-670271-670643 FAX 2919341



MAKKAH CONSTRUCTION  
AND DEVELOPMENT COMPANY  
MAKKAH - SAUDI ARABIA



DEVELOPMENT OF THE AREA  
SURROUNDING AL-MASJID AL-HARAM

3  
SHEET NO.  
SCALE 1:1000